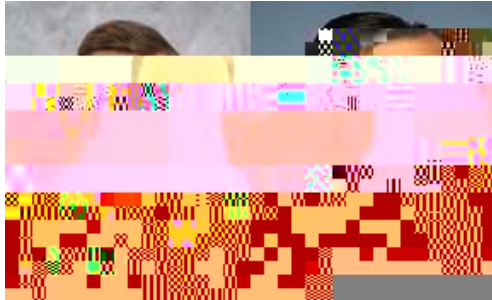


# New poll puts LoBiondo ahead of Hughes in closer-than-usual 2nd District race

Written by Bill Barlow Tuesday, October 07, 2014 10:14 am



< 8



The relatively brief LoBiondo response to the poll did not include any quotes from the congressman, but included mention of recent endorsements for the incumbent, including from unions representing firefighters and casino workers.

The statement also accused the Hughes campaign of falsely blaming LoBiondo for casinos closing in Atlantic City, pointing out that the casinos are regulated at the state level, not federally.

Fifty-six percent hold a favorable view of Booker and 30 percent have an unfavorable view.

Fifteen percent are unsure, unfamiliar with him or not expressing a choice. Forty-six percent say

Booker is doing an excellent or good job, and 48 percent rate his performance as fair or poor.